



COMPANY PROFILE 2022

Hello!

Greetings from,





Foreword

The year 2022 is monumental and pivotal at various levels. We are entering another round, and, hopefully, the last wave of the COVID19 pandemic. Amidst the hardship of the pandemic, disasters continue striking various parts of the world signifying the impact of climate change and the imperative to utilize the best available science and knowledge for disaster risk reduction and resilience development at large. The same goes with our team CARI! which continues its growth through remote work modalities in meeting the diverse needs of resilience stakeholders in Indonesia, Southeast Asia, and beyond.

Inaugurated in March 2019, CARI! reach its third year in 2022. CARI! has grown strongly despite various challenges. From a mere concept and mock-up of the CARI! Engine to CARI! Engine 2.0. From less than 10 team members to close to 30 members by 2021. From P1 (Premium Analytics number 1) to P27 in early 2022 and counting. On the business development front, by the end of 2021, CARI! revenue has grown sixteen-fold in comparison to 2019. And as a social enterprise, 60% of the profit is reinvested to make sure the public services of CARI! through the Main Portal of search engine for disaster knowledge, its research and development activities, and distribution of monthly Indonesia Disaster Knowledge Update remains free for everyone for years to come.

We are so excited to continue growing with all partners and clients in 2022, 2023, and beyond. This year marks the conduct of the Global Platform for Disaster Risk Reduction (GPDRR) in Bali, Indonesia. CARI! will be there to launch the third upgrade of CARI! Engine. CARI! also continues our support to various sectors in ASEAN processes and two major projects in Lao PDR. Ultimately, CARI! continues its conviction to transform Indonesia as not only the supermarket and laboratory of disasters but towards the source of risk-anticipation and resilience-building solutions. Let's renew our engagement with CARI! in 2022 and beyond!

On behalf of the CARI! Team

Mizan Bisri

table of contents

Foreword	3
About CARI!	5
Our Expertise	5
The Genesis of CARI!	6
Principals of CARI!	7
Problems and Solutions	8
CARI! Approach – Integrated Knowledge Management & Work Principles	9
CARI! Operation Model	10
CARI! Products	11
CARI! Services	12
Our support for Premium Analytics (Use Cases)	12
Our support for ICT Systems Integration	14
Our support for Human Capacity Building	15
Our support for Strategic Planning	16
Growth of CARI!	17
Number of Projects	17
Number of Team Members	17
Number of Data Asset	18
Partners and Clients	19
Recognitions	21
External Outreach	22

About CARI!

Cerdas Antisipasi Risiko bencana Indonesia (CARI!)* is a research & information technology **start-up working to enhance knowledge management for disaster risk reduction and resilient development.**

The paramount vision from the development of CARI is to accelerate the development of a disaster-resilient environment throughout Indonesia and beyond. CARI! supports government, academics, enterprises, and many others *to bridge the whole scientific knowledge to the public.*

(*) CARI is an Indonesian word for “search” – Our full name express a passion to “anticipate disaster risk intelligently (by using science)”

OUR EXPERTISE



THE GENESIS OF CARI!



Founded in 2019, Cerdas Antisipasi Risiko Bencana Indonesia (CARI!) is a disaster-related knowledge-management-engine brand. CARI! is currently an independent and autonomous unit of PT. Samisa Puspaloka, a family-based engineering and management consultant company founded in 2012 and registered at Bandung City Government, Indonesia. Reference letter Number 14/SKDP/SKM/II/2012.



CARI! provides an ICT and spatial-based services for an end-to-end disaster and humanitarian knowledge management leveraging on the power of data science, machine learning, and tailor-made resilience intelligence.



CARI! has full independence in its operations from PT. Samisa Puspaloka. Only in some administrative and financial matters, CARI! is leveraging on the available accounts and facilities of PT. Samisa Puspaloka.



CARI! engine and algorithm is inspired by Dr. Bisri's post-doctoral research project (JSPS Kakenhi Grant 18F18810, conducted at United Nations University and The University of Tokyo) and developed in-house by CARI! co-founders.

PRINCIPALS OF CARI!



Mizan B. F. Bisri, PhD

Founder | Principal

Disaster Risk Management Specialist

Dr. Mizan Bisri is the founder & Principal of CARI! and concurrently an Assistant Professor of Kobe University. With more than 12 years of experiences, he combined a unique urban planning and political science approaches

for disaster risk management, humanitarian action and resilience building with focus in Southeast and East Asia. Dr. Bisri continues striving to be your trusted knowledge producer and broker for a resilient and sustainable future. He is an alumni of Bandung Institute Technology and Kobe University.



Retno Rifa Atsari, MSc.

Co-Founder | Vice-Principal

Disaster Risk Management Specialist

Rifa is a disaster management professional with more than seven years of experiences having worked for National Disaster Management Authority (BNPB), the World Bank, WeCare. She possessed her MSc in Geophysical

Engineering, and BSc in Oceanography from ITB (Indonesia). Rifa started her career as a Geophysical Consultant for oil and gas companies. She brings her knowledge in business development to disaster risk management. Rifa is also leading the portfolio on science communication, IEC and knowledge products development, and project management.



Yos Malole, Msc.

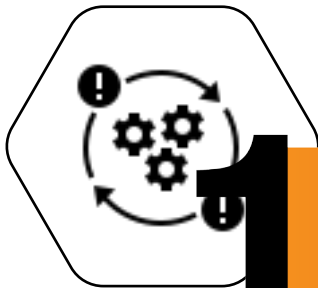
Vice-Principal

Disaster & Emergency Management Specialist

Yos is a Disaster Management specialist with 15 years of working experience in disaster management covering implementation of community-based disaster risk reduction program, emergency response operations, rehabilita-

tion and recovery. Yos have been working for several humanitarian organisations including the British Red Cross Society, American Red Cross, and the ASEAN Coordination Centre for Humanitarian Assistance on disaster management. He holds a master degree on International Disaster Management from The University of Manchester, Humanitarian Response and Conflict Response Institute, the United Kingdom.

PROBLEMS AND SOLUTIONS



PROBLEMS

- that we're trying to solve

1

Insufficient local risk knowledge for applicable policy creation & investments

2

Limited access to niche disaster experts for private sectors and investors

3

Missing link between risk information and risk knowledge and resilient development efforts (policy & implementation)



SOLUTIONS

CARI! provides a spatial-based portal enabling access to risk & resilience analytics and insights based on scientifically proven and published research.

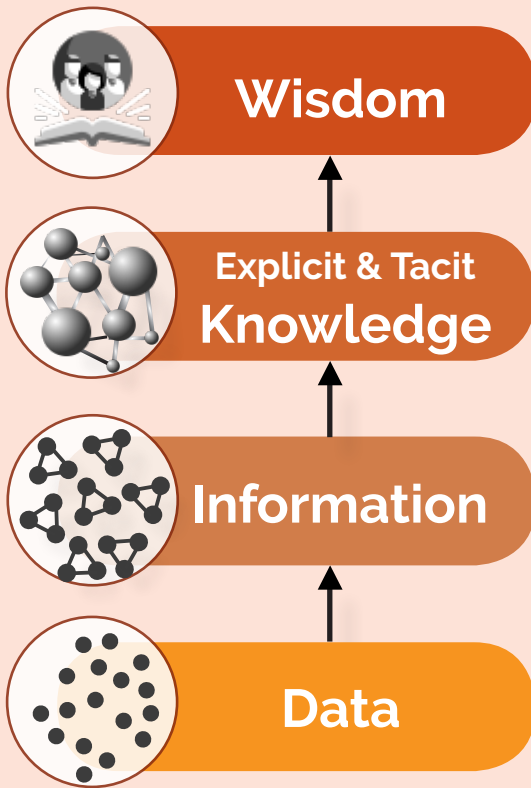


CARI! provides premium analytics, tailor-made capacity building, and ICT systems integration for various purposes of resilient development.

CARI! Approach –

Integrated Knowledge Management & Work Principles

Ladder of DIKW

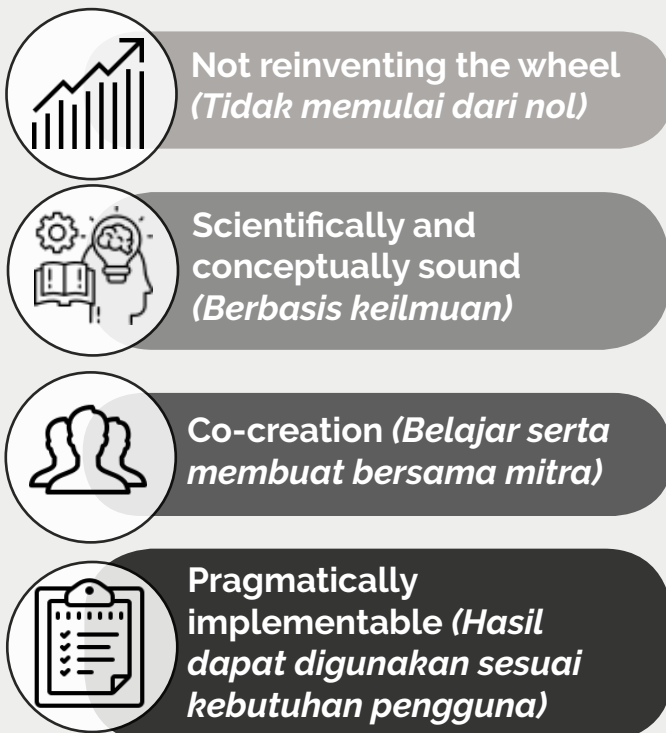


Integrated KM by CARI!



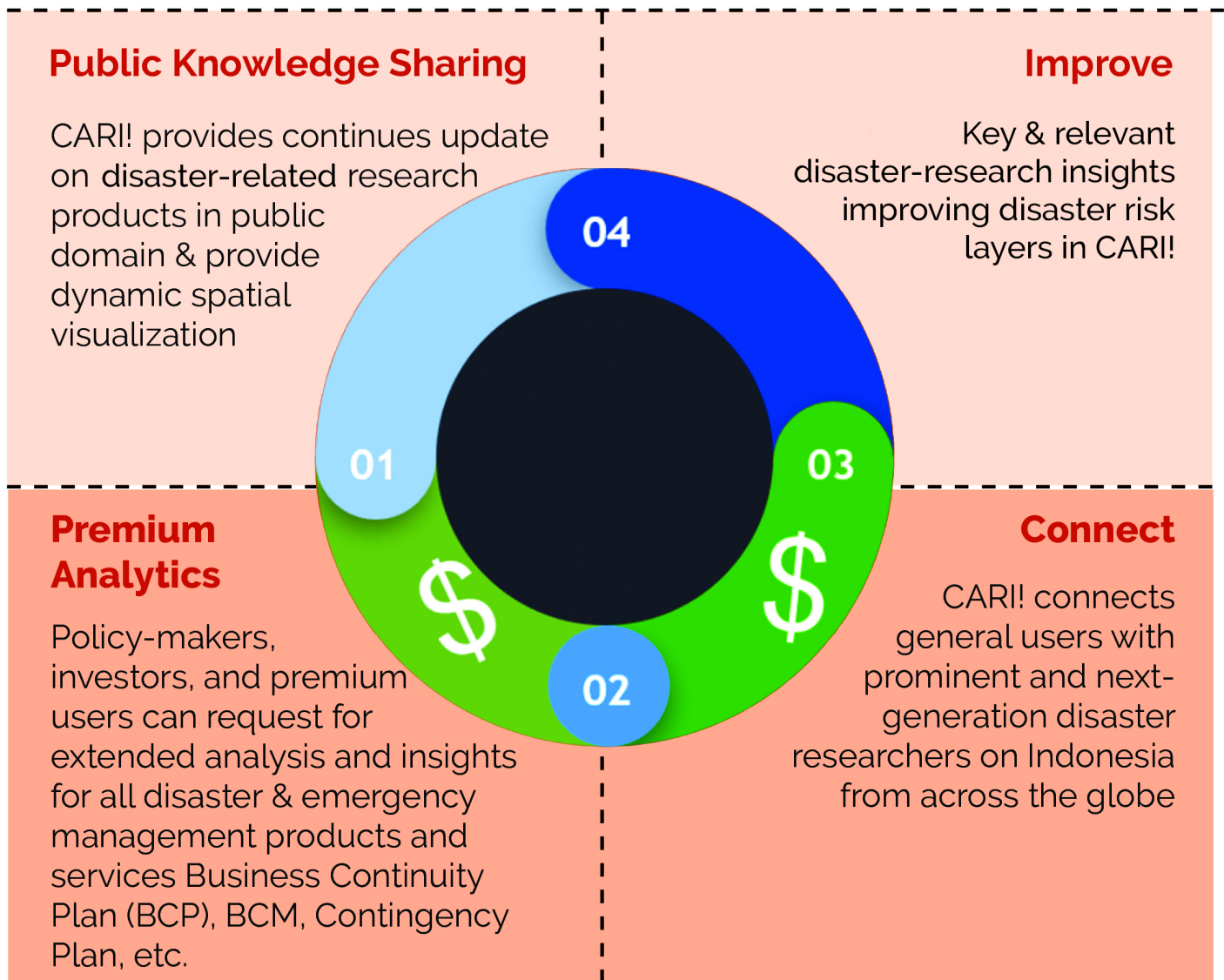
(Nonaka et al, 1995; Shuhajat et al, 2019;
Andreev et al, 2017; Bisri et al, 2020;
Oktari et al; 2020; Hanifa et al, 2020)

Work Principles



CARI! Operation Model

"Socio-entrepreneur: By engaging us through paid service, you're helping a free and accessible web-base knowledge management platform for public..."

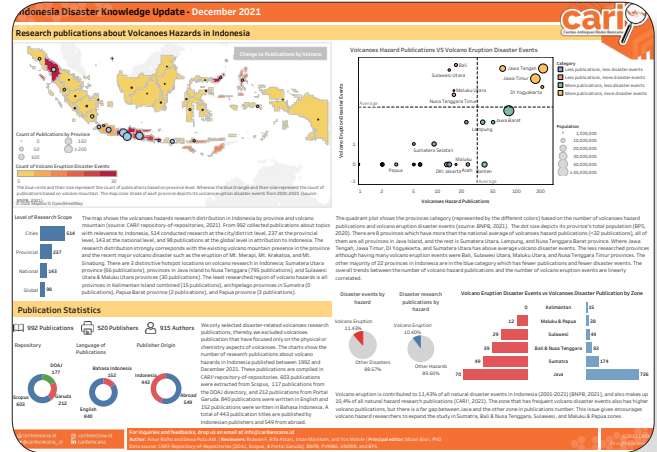


CARI! Products



Automatic Crawling Engine -
CARI! Engine Ver 2.0 (main portal)

caribencana.id



Indonesia Disaster Knowledge
Update (IDKU)

caribencana.id

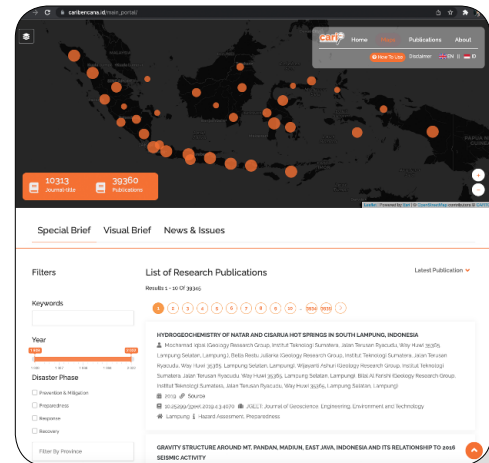
> Special Briefs > Knowledge Updates



Social Media Outreach

<https://www.instagram.com/caribencana.id/>

<https://www.linkedin.com/company/71496400/admin/>



Spatial-based disaster related journal
& research repositories across
Indonesia and Southeast Asia
(main portal)

https://caribencana.id/main_portal/

CARI! Services

OUR SUPPORT FOR PREMIUM ANALYTICS (USE CASES)

2019
2020
2021

- 1 Study on "Enhancing an Enabling Environment for Education Continuity in a Multi-Hazards Setting" for ASEAN Safe School Initiatives consortium, 2019, output available [here](#). **(International)**
- 2 Study on "Indonesian Humanitarian System Baseline Mapping", 2020, for Humanitarian Advisory Group, joint venture with Pujiono Centre. output available [here](#). **(National)**
- 3 InaRISK User Usability Study and promotional video production, 2020, for National Disaster Management Authority (BNPB) through INVEST-DM Program, limited report distribution. **(National)**
- 4 Technical work for AADMER Work Programme 2021-2025 formulation, joint venture RDI & CARI! for ASEAN Secretariat, output available [here](#). **(International)**
- 5 Technical Study for "Standar Pengembangan Daerah Aman Bencana (SPDAB) / Disaster-safe city/regency Standard", 2020, for National Disaster Management Authority (BNPB), limited report distribution. **(National)**
- 6 Baseline Risk Assessment of Selected Coastal Areas in Indonesia, as part of insurance program development, for Yayasan Konservasi Alam Nusantara / The Nature Conservancy (completed, April 2021), limited report distribution – please request. **(National)**
- 7 In-depth stakeholder assessment for coastal insurance program development, for Yayasan Konservasi Alam Nusantara / The Nature Conservancy (completed, 2021). Limited report distribution – please request. **(National)**
- 8 Current and Future Local Humanitarian Leadership in Indonesia, joint venture with Pujiono Centre (2021). Limited report distribution – please request. **(National)**

2021

- 9 Program development for Early Career Researchers Fellowship, the Conversation Indonesia (2021), output available here : <https://slc.theconversation.com/scoping-study-pathways-for-finding-talents-and-nurturing-research-leaders-early-career-researchers-in-indonesia/>. **(National)**
- 10 [Knowledge Management Product Development on ICDRM Program](#) in Bangladesh and the Philippines, 2021, for Plan International. **(International)**
- 11 ICT Course and Assessment of ASEAN EOCs Network Connectivity, 2021, for the AHA Centre, limited report distribution. Limited report distribution – please request. **(International)**
- 12 Rapid nationwide resilience assessment for Making Cities Resilient stages-assessment and Standard for the Development of Disaster Safe Areas for Palladium International and National Disaster Management Authority (BNPB) / SiapSiaga Program (2021). Limited report distribution – please request. **(National)**
- 13 Disaster and Climate Change Behavior Change Communication (BCC) Study for American Red Cross and Indonesian Red Cross (2021). Limited report distribution – please request. **(National)**
- 14 Technical Study for “Guideline for the calculation of the number of death caused by disasters”, 2021, for National Disaster Management Authority (BNPB) through INVEST-DM / USAID (2021). Limited report distribution – please request. **(National)**

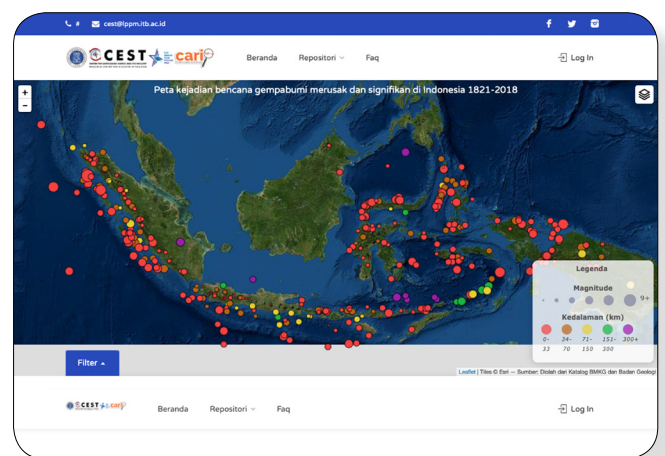
2022

- 15 Comprehensive Multi-hazards Vulnerability and Risk Assessments (CMVRA) in Attapeu Province and preparation of CMVRA guidelines, for MoLSW Lao PDR through IPCREA funded by KOICA. (ongoing, 2021-2022). **(International)**
- 16 Preparation of SOPs for Emergency Operations Center and Emergency Response Planning, for MoLSW Lao PDR through IPCREA funded by KOICA. (ongoing, 2021-2022). **(International)**
- 17 Vulnerability assessment of Seascape in Raja Ampat, for Yayasan Konservasi Alam Nusantara (ongoing). **(National)**
- 18 Integrating Nature-based Solutions into DRR and CCA in Indonesia (national), for Yayasan Konservasi Alam Nusantara & The Nature Conservancy (ongoing). **(National)**

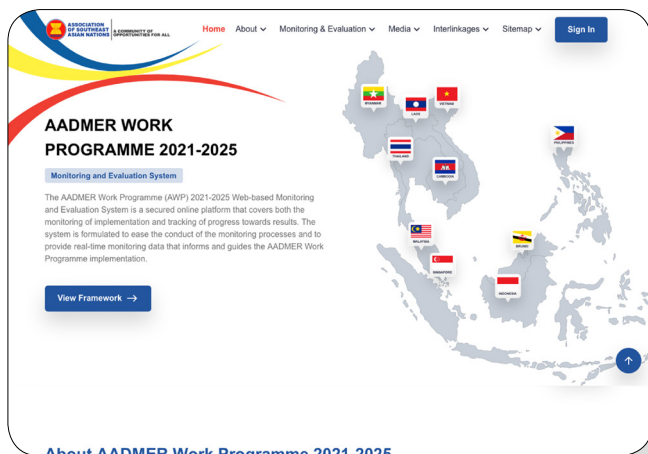
OUR SUPPORT FOR ICT SYSTEMS INTEGRATION



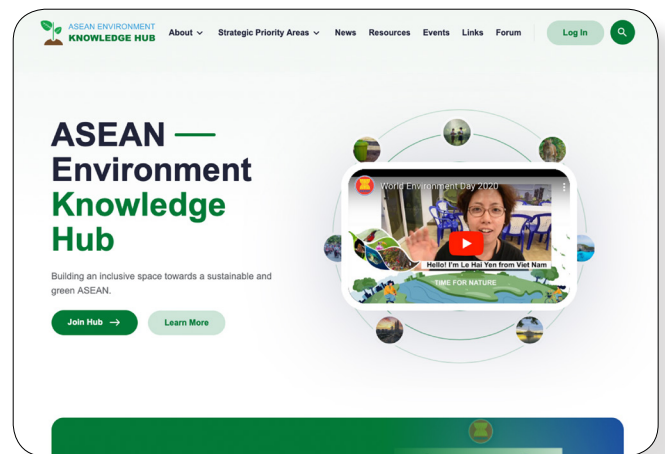
Indonesian Disaster History Portal
<http://sejarah.dibi.bnppb.go.id/>



Earthquake Knowledge Portal
https://caribencana.id/portal_cest/



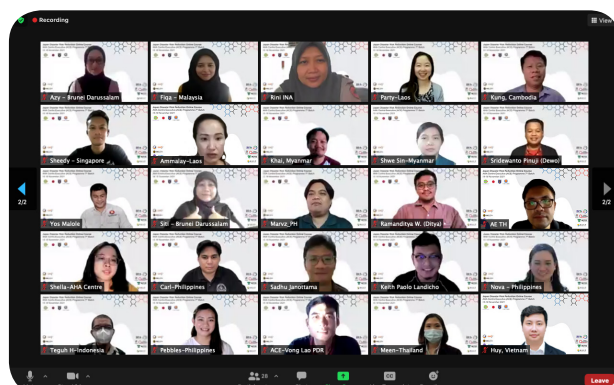
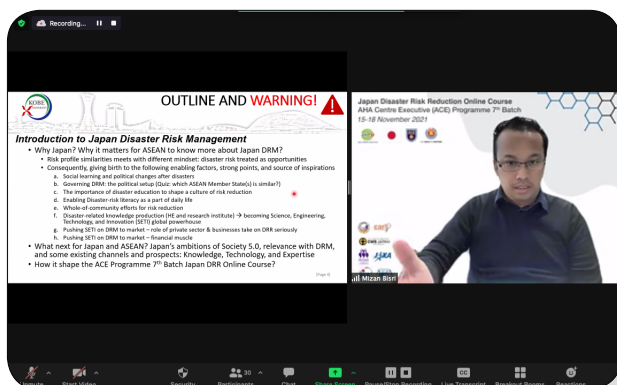
AADMER Work Programme
 Web-based M&E System
mneawp.asean.org



ASEAN Environment
 Knowledge Hub

"From 2019, CARI! also supported six other ICT systems for undisclosed clients."

OUR SUPPORT FOR HUMAN CAPACITY BUILDING



ACE Programme - Japan Disaster Risk Reduction Course



Science Leadership Collaborative

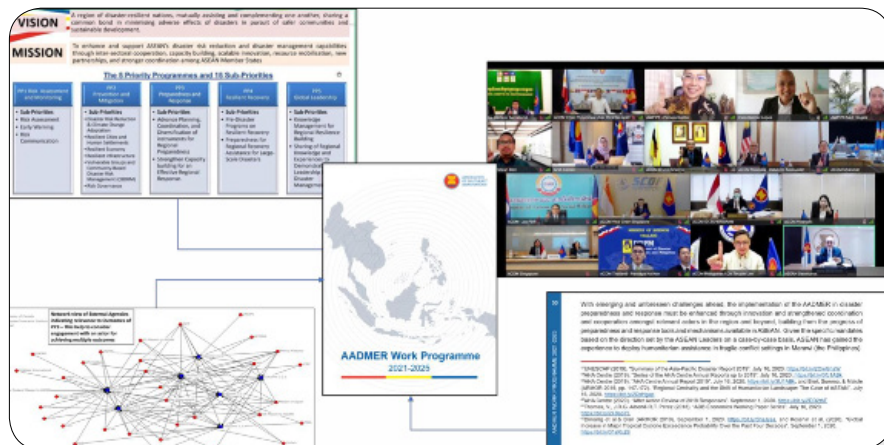


Tagana Training-Simulation exercise



Nutrition in Emergency Training

OUR SUPPORT FOR STRATEGIC PLANNING



Technical work for developing ASEAN's AADMER Work Programme 2021-2025



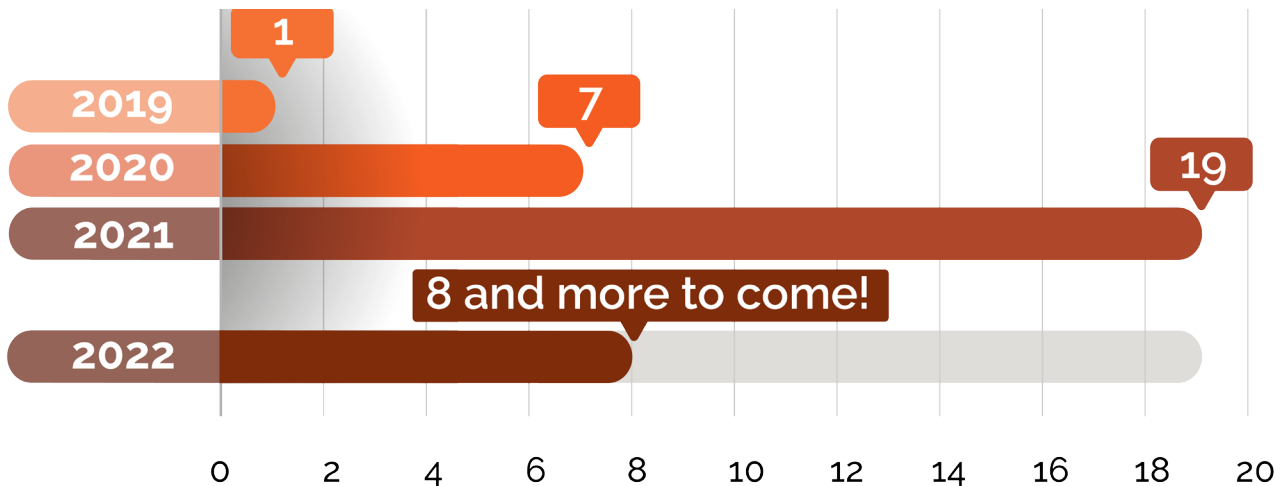
Comprehensive Multi-hazards Vulnerability and Risk Assessment (CMVRA), guideline, and training manual.



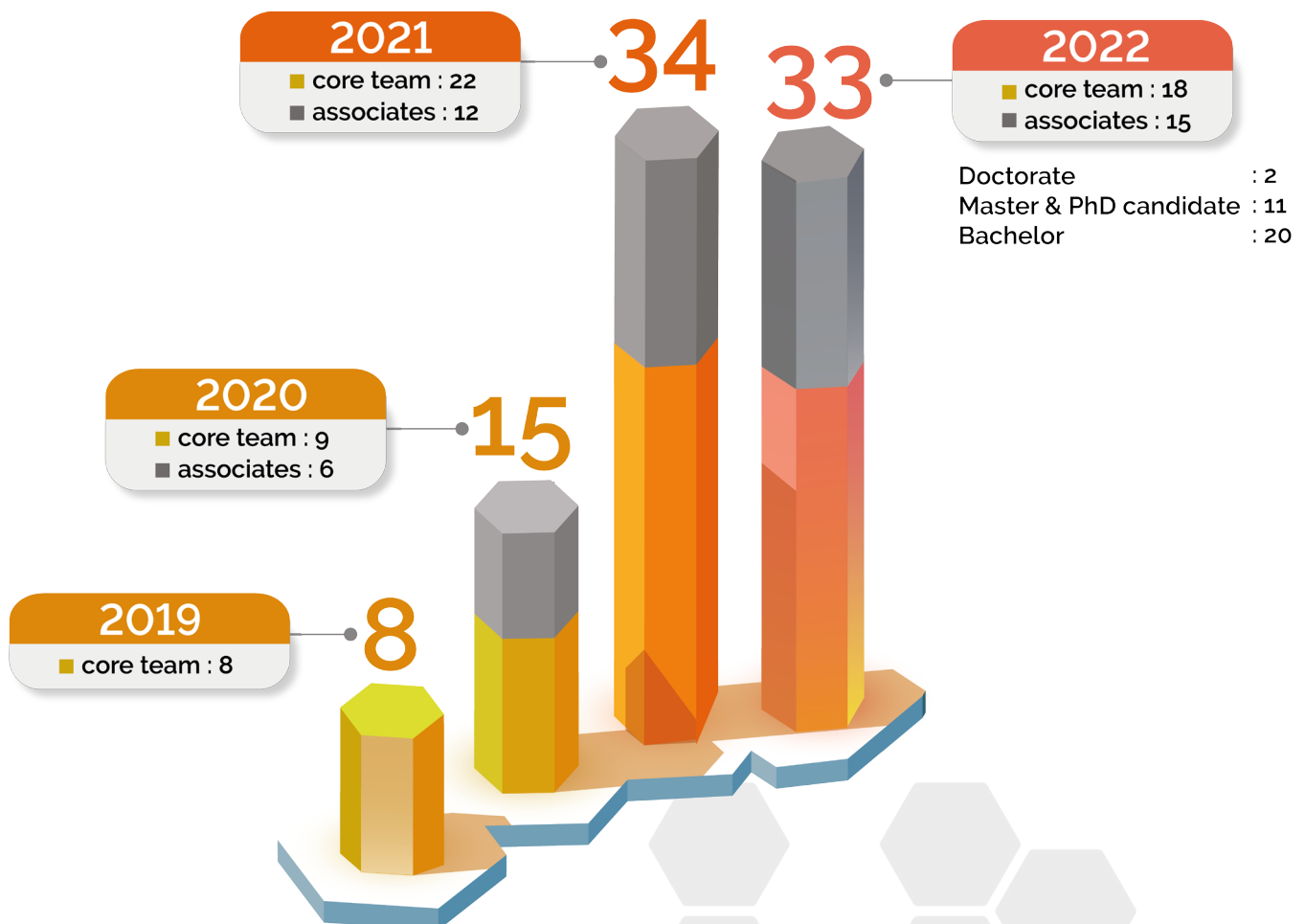
Development of SOPs on: Emergency Operation Centre, and National and Local Response Preparedness

Growth of CARI!

NUMBER OF PROJECTS

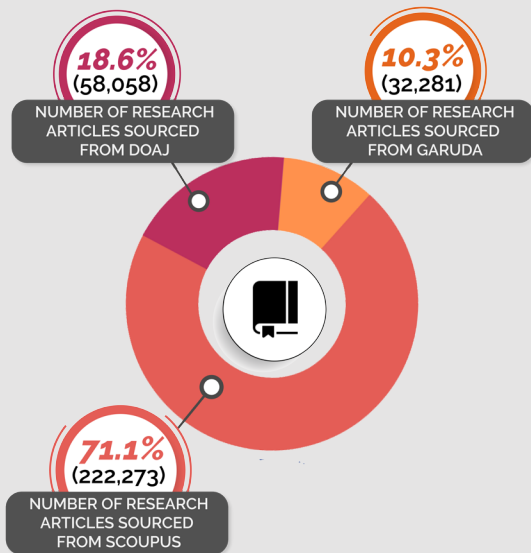


NUMBER OF TEAM MEMBERS

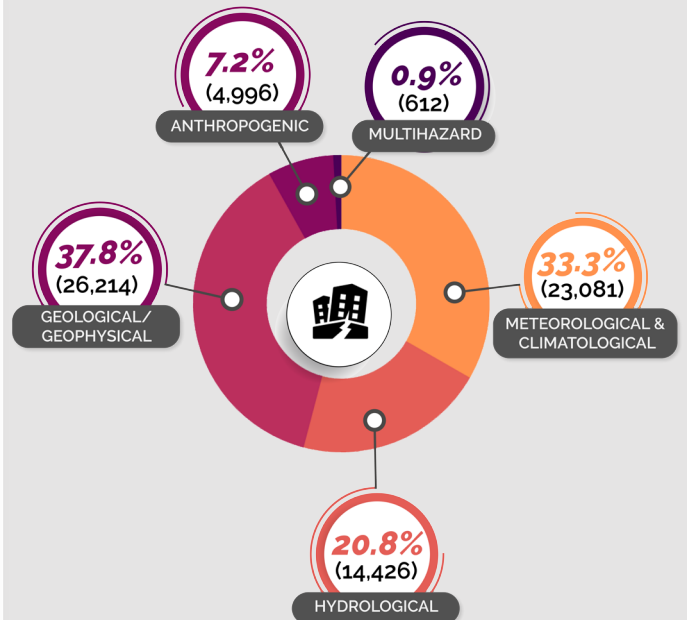


NUMBER OF RESEARCH PUBLICATIONS IN CARI! REPOSITORY-OF-REPOSITORIES (DATA AS OF 29 MARCH 2022)

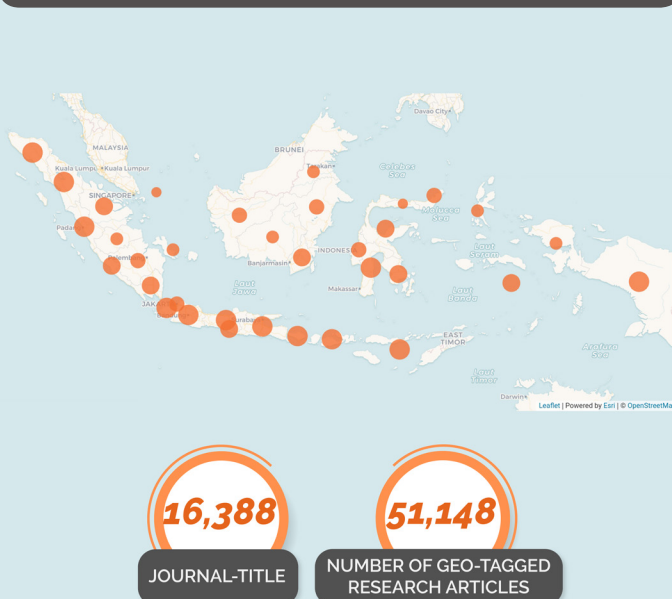
NUMBER OF RESEARCH PUBLICATION BY SOURCE



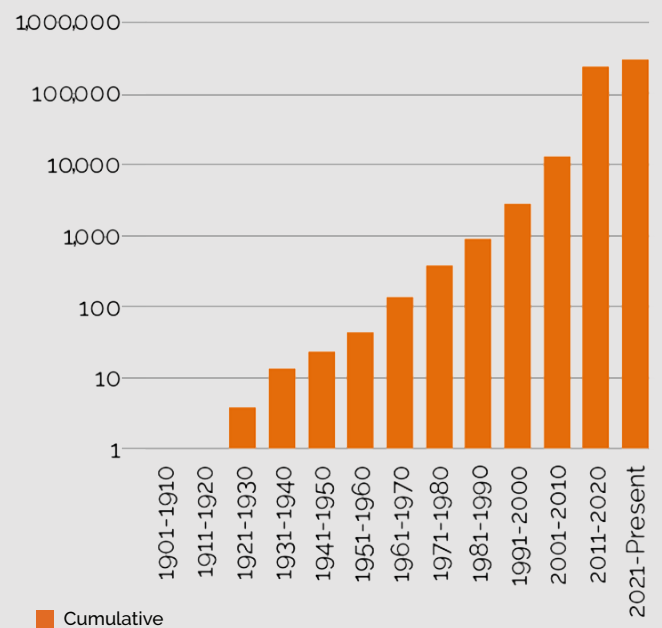
NUMBER OF RESEARCH PUBLICATION BY HAZARD CLUSTER



NUMBER OF RESEARCH PUBLICATION BY LOCATION



NUMBER OF RESEARCH PUBLICATION BY YEAR



Partners and Clients

Government



Australian Government



BNPB (*Badan Nasional Penanggulangan Bencana*)



Department of Social Welfare, Government of Lao PDR



KBRI Tokyo



SRIT (*Sekolah Republik Indonesia Tokyo*)

University



ITB (Institut Teknologi Bandung)



Universitas Pertamina



UNJ (*Universitas Negeri Jakarta*)

Non-Government & International Organizations



AHA Centre



American Red Cross



ASEAN
(The Association of Southeast Asian Nations)



ASSI (ASEAN Safe School Initiative)



CARE



FPCI (Foreign Policy Community of Indonesia)



Hanns Seidel Stiftung



JAIF (The Japan-ASEAN Integration Fund)



KOICA (Korea International Cooperation Agency)



Konservasi Alam Nusantara

Non-Government & International Organizations



MPBI (*Masyarakat Penanggulangan Bencana Indonesia*)



Palladium



Plan International



PMI (*Palang Merah Indonesia*)



PREDIKT
(Preparedness for Disaster Toolkit)



Pujiono Centre



RDI (Resilience Development Initiative)



su-re.co



The Climate Reality Project Indonesia



U-INSPIRE



Wahana Visi



WAPSI (*Wahana Aksi Pekerjaan Sosial*)

Media



TCID (The Conversation Indonesia)



SiagaBencana.com

Recognitions



ACHIEVEMENT

**Best Innovation at
World BOSAI Forum 2019**

*Best Innovation at
World BOSAI Forum 2019*



*#1 Runner Up the Tanoto Foundation and
Wharton School 2021 Ideas for Action
Incubator Competition*



*CAR! feature in UNDRR's 2020 Status of Science and
Technology in Disaster Risk Reduction in Asia-Pacific*

External Outreach




Founder CARI! Mizan Bustanul Fuady Bisri, PhD yang juga merupakan IRDR Young Scientist Fellow menjadi salah satu pembicara pada sesi IRDR Achievements and Lessons Learnt. Dr. Mizan memberikan pemaparan tentang refleksi program IRDR Young Scientists yang telah berjalan sejak tahun 2014.

→

caribencana.id




IG LIVE
Climate-Resilient Development

Speakers:
Cynthia Wardhana, Dewa Putu A. M. M.Sc., Chirissa Rahmawati

Friday, 27th of August 2021
19.00 - 20.00 WIB (GMT+7)
@su-re-co
@caribencana.id

caribencana.id




Lokakarya Nasional Peningkatan Ketangguhan Daerah Menghadapi Bencana

Mengundang perwakilan BAPPEDA dan BPBD seluruh kota dan kabupaten di Indonesia

Opening & Remarks
Dr. Raditya Jati, S.Si, M.Si, Deputi Bidang Sistem dan Strategi BNPB
Dr. Bernadita I. Tjandradewi, Sekjen UCLG Asia-Pacific
Pengantar MCR-2030 dan program ketangguhan di Indonesia
Ibu Lucy Dickinson, Team Leader, Program SIAP SINGAPORE
Dr. Mizan B.F. Bisri, Principal Care
Pengantar Kajian Cepat Penilaian Ketangguhan Kabupaten/Kota di Indonesia

24 Agustus 2021
Pukul 08.00-12.00 WIB

Link ZOOM Meeting:
bit.ly/mcr2030indonesia
Narahubung: WA Direktorat PSPB +6281293937799

caribencana.id




WEBINAR PELUANG ASURANSI PEMULIH KORBAN BENCANA

SEPTEMBER 2021
09.00 WIB - SELESAI

NARASUMBER
Mizan Bustanul Bisri, PhD, CARI!
Budi Kurniawan, PhD, The Nature Conservancy
Peggy Siregar, PhD, The Nature Conservancy

caribencana.id




RESILIENSI
INDONESIA TANGGAP MENGHADAPI BENCANA

GEMPA M6,2 SULBAR

Yuk temukan CARI! di Majalah RESILIENSI!

Link tersedia di bio!

caribencana.id




Atasi supermarket bencana indonesia dengan CARI!

StepNesia Podcast

Apr 30 • 8 mins left

Episode Dr. Mizan Bustanul Bisri, PhD, CARI!
"Indonesia yang tangguh menghadapi bencana"

Yuk Lebih mengenal CARI! dengan mendengarkan StepNesia Podcast

Link tersedia di bio!

caribencana.id




WHY WAS TSUNAMI SO DEVASTATING?

INDONESIAN TSUNAMI RISES TO 373 DEAD

INDONESIA ID



Thank You!

Big data is enriching, Actionable information is critical, but Knowledge-based investment and development is indispensable for genuine resilience!

Contact Us!

Website : caribencana.id
e-mail : info@caribencana.id
Instagram : [@caribencana.id](https://www.instagram.com/caribencana.id)
LinkedIn : [caribencana](https://www.linkedin.com/company/caribencana)



Tokyo Studio

3-18-24 Nishiayashe, Adachi-ku
Tokyo, Japan 12-0014
Phone : +81-80-4838-4516

Mailing Address

Jalan Sepakbola No. 5, Arcamanik Endah,
Bandung, Jawa Barat, 40293
Phone : (+62)81-1203-0108